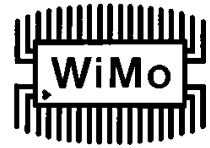




## PA23R Flachantenne für 23cm (1240-1320 MHz)

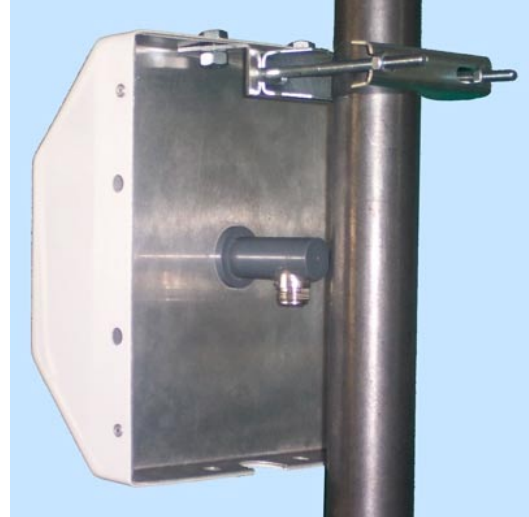
directional antenna for 23cm (1240-1340 MHz)

Best.Nr. 18032



Gekapselte Flachantenne für Außenmontage mit 12,5 dBi Gewinn. Lieferung mit Mastschellen für 30-65mm Mastdurchmesser.

Encapsulated outdoor antenna with radome with a gain of 12.5 dBi. Supplied with mast bracket suitable for 35 to 65 mm dia.



im Bild mit vertikaler Polarisation montiert

vertical polarization if mounted as shown

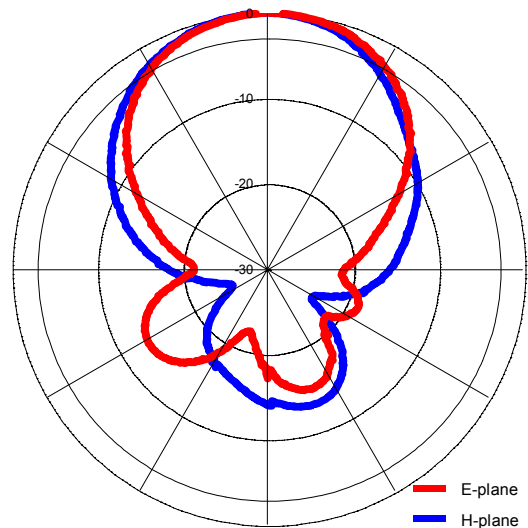
### Electrical parameters

Frequency range	1240 – 1320 MHz
Gain (at center freq.)	12.5 dBi
VSWR	<1.5
3dB beam width	E: 55° H: 65°
Front-to-back ratio	>15 dB
Impedance	50 Ω
Max input power	50 W
Polarization	Linear (V or H)

### Mechanical parameters

Cover material	White PVC
Elements material	Copper, Aluminium
Holder material	Aluminium
Mast clamp	30 – 65 mm
Temperature	-30 °C - +60 °C
Connector	N <sub>female</sub>
Dimensions	210x210x110 mm
Weight	700 g

Radiation pattern:



## WiMo Antennen und Elektronik GmbH

Am Gäxwald 14, D-76863 Herxheim Tel. (07276) 96680 FAX 9668-11

<http://www.wimo.com>

e-mail: [info@wimo.com](mailto:info@wimo.com)