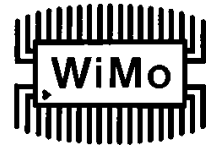




PA13R-20

Flachantenne für 2300-2500 MHz /directional antenna for 2300-2500 MHz
Best.Nr. 18033.20

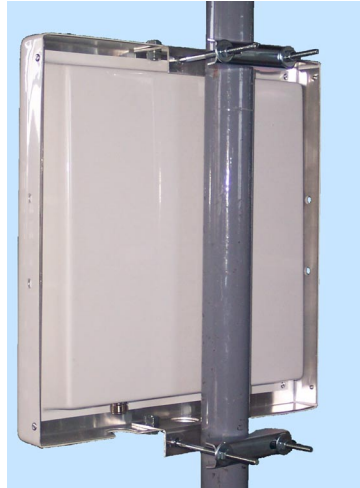


Gekapselte Flachantenne für Außenmontage mit 20 dBi Gewinn. Lieferung mit Mastschellen für 30-65mm Mastdurchmesser. Optionell lieferbar: Neigehalter Best.Nr. 18033.20NH

Encapsulated outdoor antenna with radome with a gain of 20 dBi. Supplied with mast bracket suitable for 35 to 65 mm dia. Option: tilt mount # 18033.20NH.



front view



rear view



with optional tilt mount

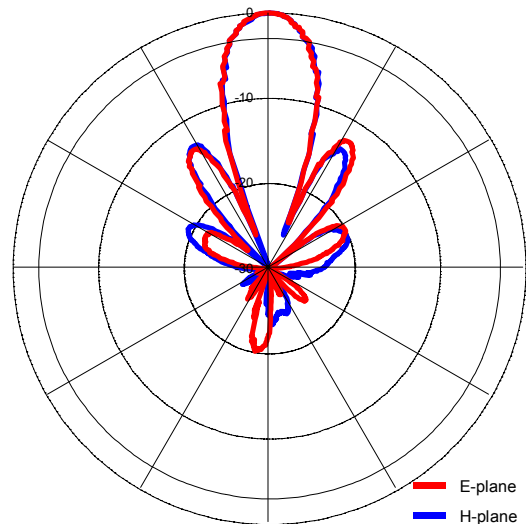
im Bild mit vertikaler Polarisation montiert

/ vertical polarization if mounted as shown

Electrical parameters

Frequency range	2300 – 2500 MHz
Gain (at center freq.)	20 dBi
VSWR	<1.5
3dB beam width	E: 18° H: 20°
Front-to-back ratio	>15 dB
Impedance	50 Ω
Max input power	50 W
Polarization	Linear (V or H)

Radiation pattern:



Mechanical parameters

Cover material	White PVC
backplane material	Aluminium
Mast dia.	30 – 65 mm
Temperature	-30 °C - +60 °C
Connector	N female
Dimensions	330x330x85 mm
Weight	2000 g

WiMo Antennen und Elektronik GmbH

Am Gäxwald 14, D-76863 Herxheim Tel. (07276) 96680 FAX 9668-11
<http://www.wimo.com> e-mail: info@wimo.com