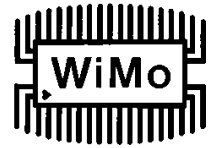




SA24-120-11

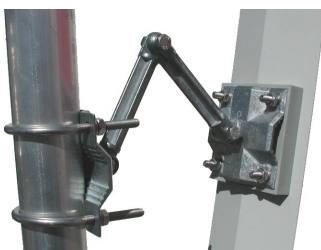
Sector antenna 2.4GHz #18655.11



Professionelle Sektorantennen 2.4GHz für Ausseninsatz. Zur großflächigen Ausleuchtung von Hotspots, Hallen, Freiflächen usw. Horizontaler Öffnungswinkel ca. 90° oder 120°, Anschluß N-Buchse. Das mitgelieferte Montagematerial erlaubt das Neigen der Antenne bis ca. 60°. Anschluß: N-Buchse.

Professional sector antennas 2.4GHz for indoor or outdoor use. Used for illumination of large areas like hotspots, halls, yards etc. Horizontal HPBW 90 or 120°, N female connector. The included mounting hardware allows a downtilt of up to 60°. Connector: N jack (female).

Technical Data				
Model	SA24-90-15	SA24-90-17	SA24-120-11	SA24-120-16
Polarisation	Vertical			
Frequency range	2400 – 2483 MHz			
VSWR	< 2.0			
Connector	N-Buchse			
Max. Power	20W			
Gain	15dBi	17dBi	11dBi	16dBi
Hor. HPBW	90°	90°	120°	120°
Vert. HPBW	20°	12°	25°	14°
Size	625x150x64mm	975x150x64mm	425x150x64mm	975x150x64mm
Weight	1950g	2200g	1700g	2250g
Order No.	18650.15	18650.17	18655.11	18655.16



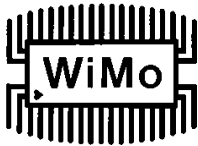
Tilt mount

WiMo Antennen und Elektronik GmbH

Am Gäxwald 14, D-76863 Herxheim Tel. (07276) 96680 FAX 6978

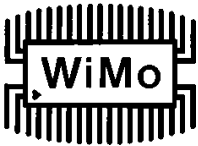
<http://www.wimo.com>

e-mail: info@wimo.com

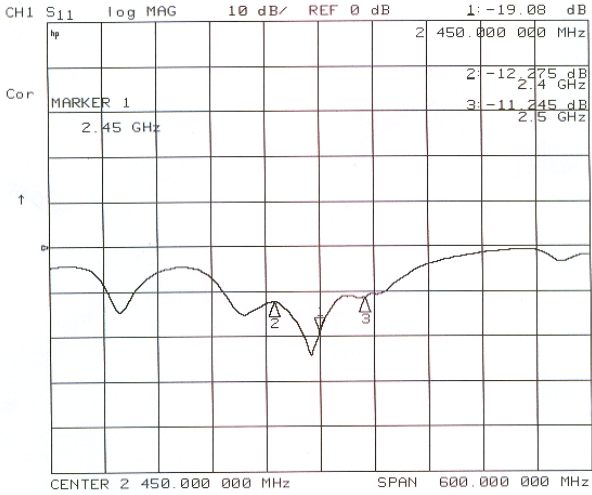


SA24-120-11

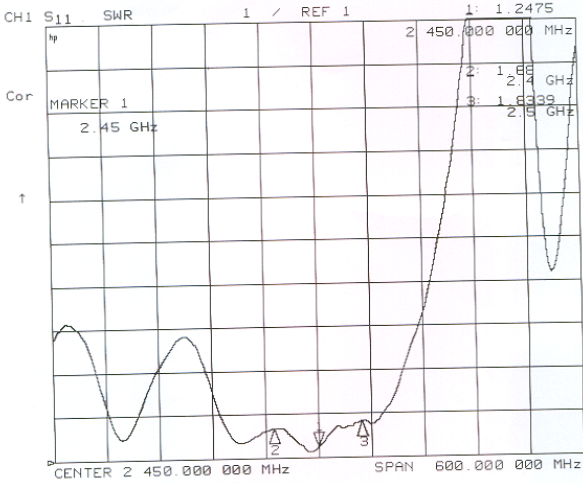
Sector antenna 2.4GHz #18655.11



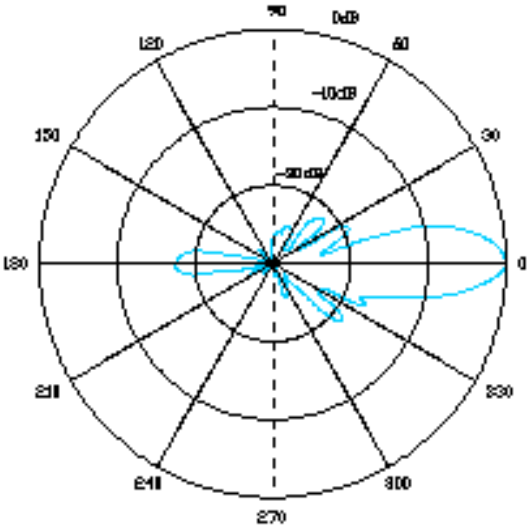
Return Loss



SWR



Vertical pattern



Horizontal pattern

