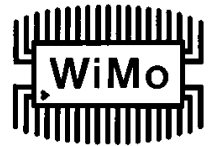


# SA50-120-15

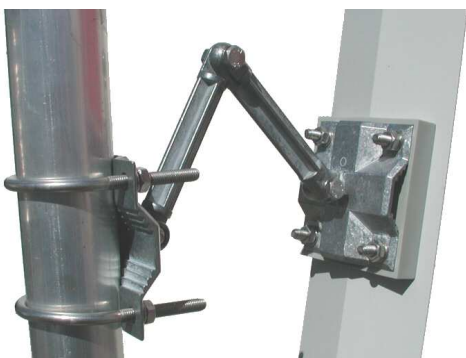
Sector antenna 5.4GHz #18730.15



Professionelle Sektorantennen 5GHz für Ausseneinsatz. Zur großflächigen Ausleuchtung von Hotspots, Hallen, Freiflächen usw. Horizontaler Öffnungswinkel ca. 90° oder 120°, Anschluß N-Buchse. Das mitgelieferte Montagematerial erlaubt das Neigen der Antenne bis ca. 60°. Anschluß: N-Buchse.

Professional sector antennas 5GHz for indoor or outdoor use. Used for illumination of large areas like hotspots, halls, yards etc. Horizontal HPBW 90 or 120°, N female connector. The included mounting hardware allows a downtilt of up to 60°. Connector: N jack (female).

Technical Data		
Model	<b>SA50-120-15</b>	<b>SA50-90-16</b>
Polarisation	Vertical	
Frequency Range	5500 – 5900 MHz	
VSWR	< 2.0	
Connector	N female	
Max. Power	10W	
Gain	15dBi	16dBi
Hor. HPBW	120°	90°
Vert. HPBW	20°	17°
Size	425x150x64mm	425x150x64mm
Weight	1700g	1700g
Order No.	18730.15	18731.16



Mastschelle mit Neigehalterung  
mast bracket



## WiMo Antennen und Elektronik GmbH

Am Gäxwald 14, D-76863 Herxheim Tel. (07276) 96680 FAX 6978

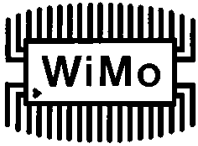
<http://www.wimo.com>

e-mail: [info@wimo.com](mailto:info@wimo.com)

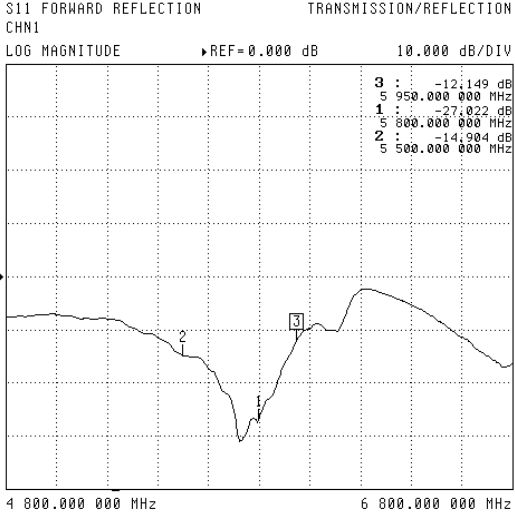


# SA50-120-15

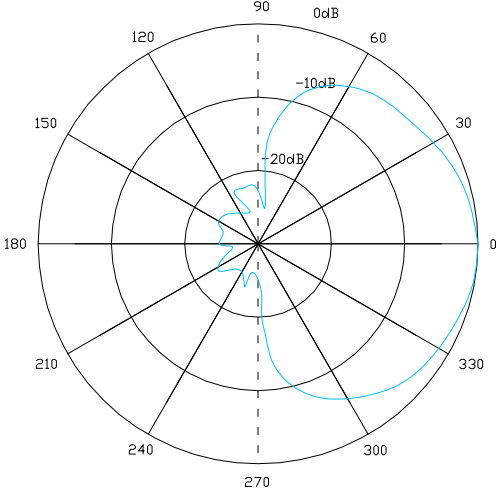
Sector antenna 5.4GHz #18730.15



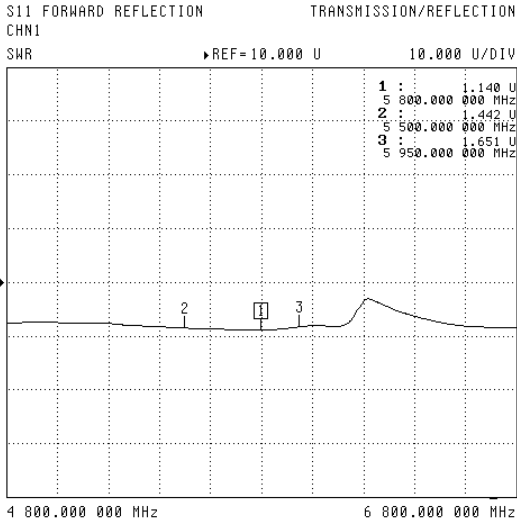
### Return Loss



### Horizontal pattern



### SWR



### vertical pattern

